



Kirchberg



- 1 Chambre de Commerce 7, rue Alcide de Gasperi Luxembourg-Kirchberg
- 2 Bâtiment Albert Wagner
- 3 Bâtiment Jean Monnet
- 4 Cour de Justice Européenne
- 5 Banque Européenne d'Investissement
- 6 Hôtels Sofitel et Novotel
- 7 Cour des Comptes Européenne
- 8 Centre National Sportif et Culturel "d'Coque"
- 9 Ecole Européenne
- 10 Centre Commercial
- 11 Luxexpo
- 12 Utopolis

**Public transports:**

- **From the train station:** bus 18 direction "Luxembourg Kirchberg"  
Stop: Jean Monnet
- **From the airport:** bus 16 direction "Hesper-Cité Um Schlass" or EUROBUS  
Stop: Erasme / D'Coque

### USEFUL INFORMATION

The event is **free** of charge.  
Cancellations after 26 February will be invoiced at 100 euros.

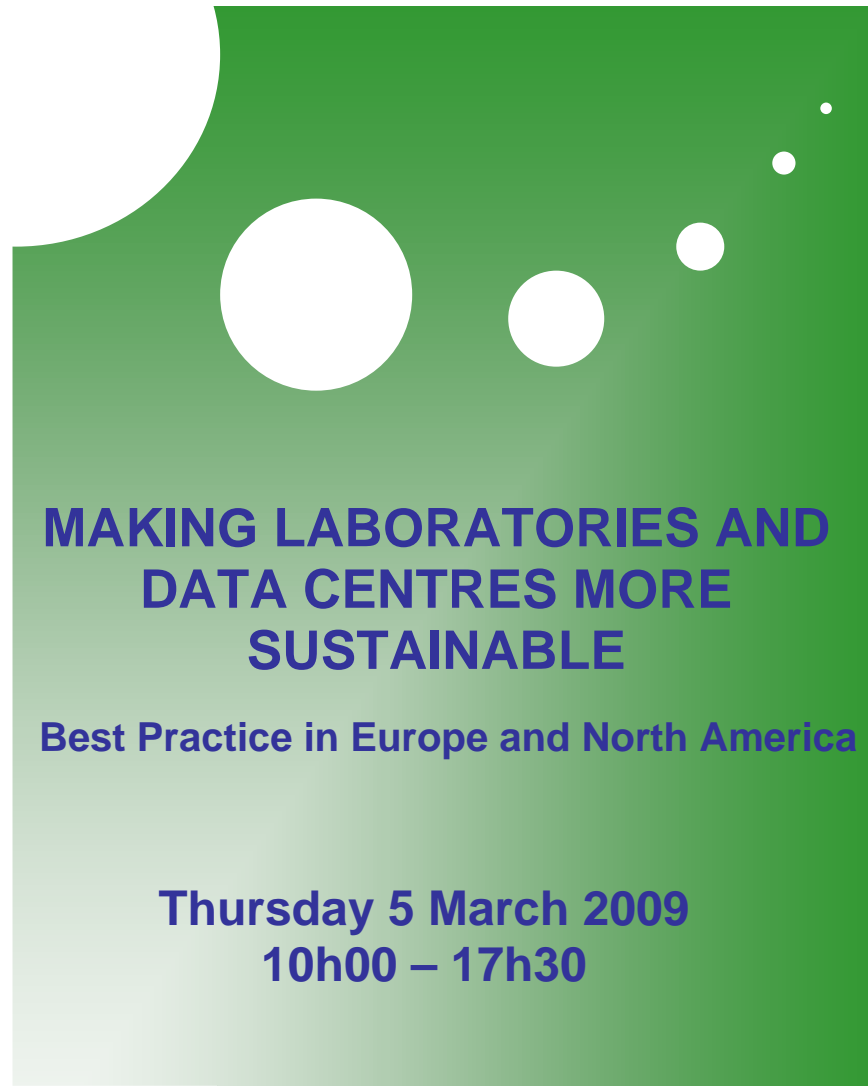
**Date:** Thursday 5 March 2009 / 10h00-17h30

**Location:** Chambre de Commerce  
7, Rue Alcide de Gasperi  
Luxembourg Kirchberg

**Language :** English

**Registration by 10 February 2009 using the registration form, which can also be downloaded at:**  
[http://www.en.uni.lu/\\_universite/developpement\\_durable/workshop\\_making\\_data\\_centres\\_and\\_laboratories\\_more\\_sustainable](http://www.en.uni.lu/_universite/developpement_durable/workshop_making_data_centres_and_laboratories_more_sustainable)

**Weblinks :**  
<http://www.uni.lu>  
<http://www.heepi.org.uk/>  
<http://www.cc.lu>



**labs for the 21st century**

Sponsored by:  
U.S. Environmental Protection Agency  
U.S. Department of Energy  
International Institute for Sustainable Laboratories



**labs for the 21st century**

Sponsored by:  
U.S. Environmental Protection Agency  
U.S. Department of Energy  
International Institute for Sustainable Laboratories

## OVERVIEW

Rising costs, new regulations and stakeholder pressures are requiring a marked reduction in the energy and environmental footprint of data centres and laboratories. Best practice experience shows that this can be achieved without compromising - and indeed enhancing – safety, but knowledge of how to do this is not widespread. It also shows that many key problems and solutions, especially those associated with cooling and ventilation, are common to both facilities.

This event will distil and disseminate this best practice through presentations by international experts and leading companies, such as Novartis, which has one of the largest science campuses in Europe. It is co-organised by the University of Luxembourg (which will use the event to inform the design of its new data centre and science campus), the UK-based S-Lab (Safe, Successful, Sustainable Laboratories) project ([www.heepi.org.uk](http://www.heepi.org.uk)), and the US Labs21 initiative ([www.labs21century.gov](http://www.labs21century.gov)). The Chambre de Commerce du Luxembourg is providing for the venue.

### Objectives:

- Identify key requirements for the sustainable design of new data centres and laboratories.
- Connect research, users and practitioners engaged in designing, constructing and equipping laboratories and data centres.
- Support the development of a European network on sustainable laboratories, involving universities, commercial and public lab operators, and designers and suppliers.

### The event will be of interest to:

- Architects, engineers involved in conceiving and constructing laboratories and IT server rooms.
- IT Directors and staff in organisations with large data centres, such as banks, governments, and universities.
- Senior managers and staff connected with laboratory research.
- Equipment manufacturers.
- National and European policy-makers active in the area of energy, environment, innovation and research.

### For more information:

**Visit:** [http://www.en.uni.lu/l\\_universite/developpement\\_durable](http://www.en.uni.lu/l_universite/developpement_durable)

### Or contact :

Julien Carton, University of Luxembourg

Mail : [julien.carton@uni.lu](mailto:julien.carton@uni.lu) - Tel : +352 46 66 44 – 6366

## PROGRAMME

Time	Programme activity
09.30 – 10.00	<b>Registration and coffee</b>
10.00 – 10.15	<b>Welcome and introduction to the University of Luxembourg's Science City project</b> <i>Ariane König, Advisor to the Rector, University of Luxembourg</i>
10.15 – 10.45	<b>Common issues and best practice in designing sustainable data centres and laboratories</b> <i>Peter James, Professor of Environmental Management, University of Bradford, and Director, S-Lab Initiative, UK</i>
10.45 – 11.45	<b>US approaches to sustainable data centres and laboratories</b> <i>Geoffrey Bell, Professor in Energy, Environmental Energy Technology Div, Lawrence Berkeley Laboratory, USA &amp; Labs21</i>
11.45 – 12.30	<b>Case study: a sustainable, IT-intensive science campus</b> <i>Reto Naef, Director of Research, Novartis</i>
12.30 – 14.00	Lunch
14.00 – 16.00	Parallel break-out sessions
(1) Data Centres	<b>EU Code</b> - <i>Liam Newcombe, British Computer Society, UK</i> <b>Case 1</b> – High dense Data Centre energy efficiency, <i>Jean-Marc Denis, Bull, France</i> <b>Case 2</b> – Innovations in Design, <i>Speaker from LuxConnect</i>
(2) Laboratories	<b>The sustainable laboratory – Overview</b> <i>Mike Dockery, Laboratory Design Consultant, Technical Director, S-Lab, UK</i> <b>Ventilation for energy efficiency AND safety</b> <i>Geoffrey Bell</i> <b>Case</b> – <i>To be confirmed</i>
16.00 – 16.15	<b>Refreshment break</b>
16.15 – 17.00	<b>Final plenary</b> – <i>practical and policy implications for the EU and Member States, and next steps towards a European initiative on sustainable laboratories and data centres</i>
17.00 – 17.30	<b>Reception sponsored by the Chambre de Commerce</b>